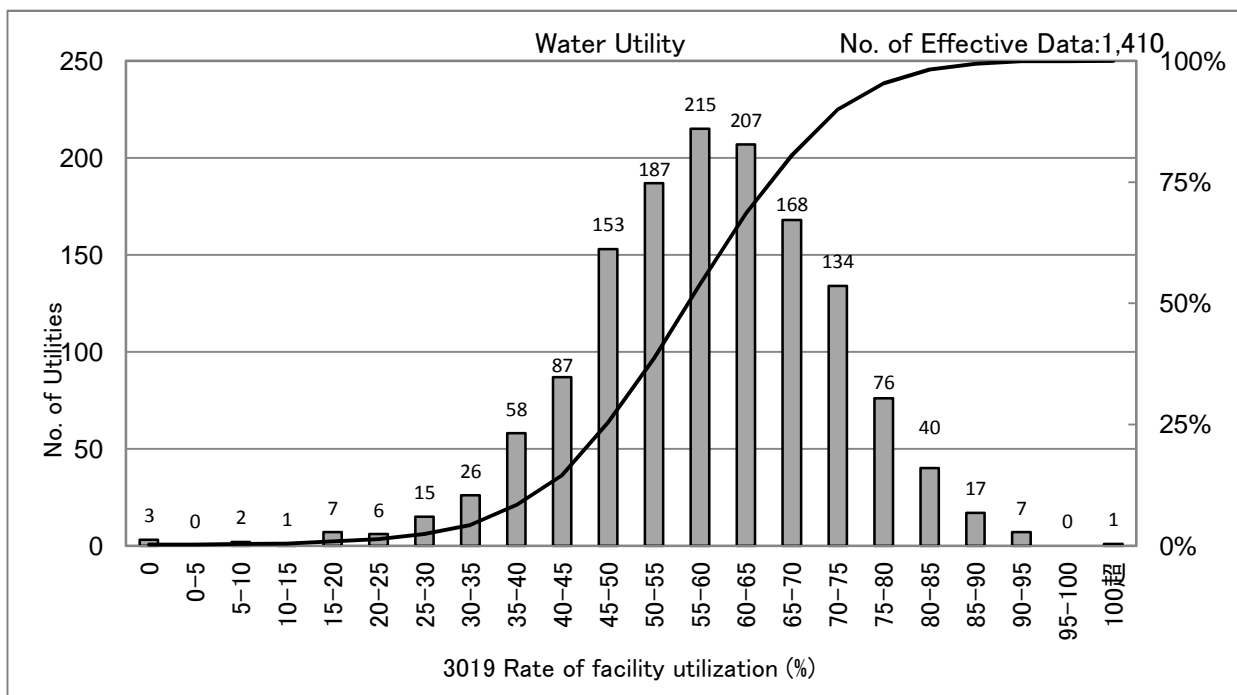


3019 Rate of facility utilization (%)

Rate of facility utilization = Average daily supply[m³/day]
/ Daily capacity[m³/day] x 100 (%)



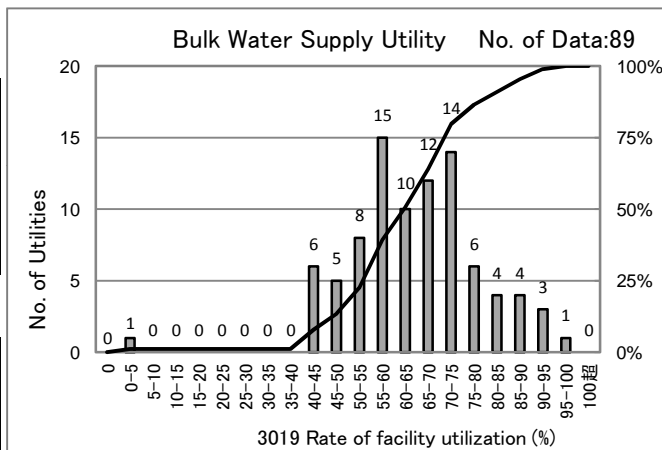
[Percentile Value] Water Utility
Fiscal year

| F.Y. | 95% | 75% | 50% | 25% | 5% |
|------|------|------|------|------|------|
| 2008 | 79.1 | 68.0 | 60.1 | 51.2 | 37.0 |
| 2009 | 78.8 | 67.3 | 59.3 | 50.1 | 36.9 |
| 2010 | 79.1 | 68.0 | 59.8 | 50.6 | 37.3 |
| 2011 | 79.2 | 67.5 | 59.2 | 50.2 | 36.5 |
| 2012 | 79.4 | 67.5 | 58.8 | 49.9 | 36.3 |

Population supplied (F.Y.2012)

| People | 95% | 75% | 50% | 25% | 5% |
|--------|------|------|------|------|------|
| <=1 | 76.9 | 63.3 | 52.7 | 41.6 | 27.1 |
| 1-3 | 80.2 | 65.9 | 57.5 | 49.1 | 38.5 |
| 3-10 | 79.2 | 69.4 | 60.2 | 52.8 | 43.4 |
| 10-50 | 80.2 | 72.5 | 64.0 | 58.1 | 48.0 |
| 50< | 72.8 | 67.6 | 63.4 | 57.5 | 50.2 |

x 10,000people



| [Percentile Value] | F.Y. | 95% | 75% | 50% | 25% | 5% |
|--------------------|------|------|------|------|------|------|
| Bulk Water | 2009 | 90.1 | 74.0 | 64.7 | 55.7 | 44.2 |
| Supply Utility | 2010 | 89.5 | 74.5 | 65.0 | 55.4 | 43.2 |
| | 2011 | 89.0 | 73.0 | 63.3 | 56.1 | 43.0 |
| | 2012 | 89.4 | 73.5 | 64.7 | 55.2 | 42.7 |

[Scatter Plot]

