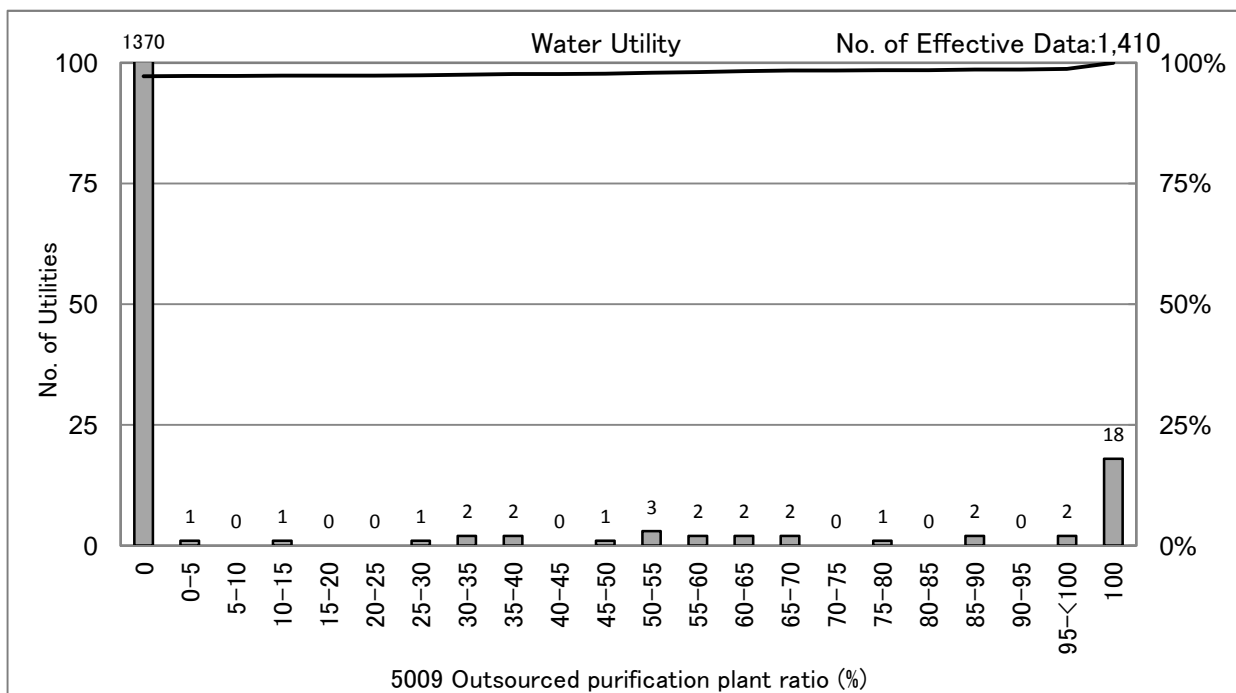


5009 Outsourced purification plant ratio (%)

Outsourced purification plant ratio = $\frac{\text{Commissioned purification capacity}[\text{m}^3/\text{day}]}{\text{Total purification capacity}[\text{m}^3/\text{day}]}$ (%)



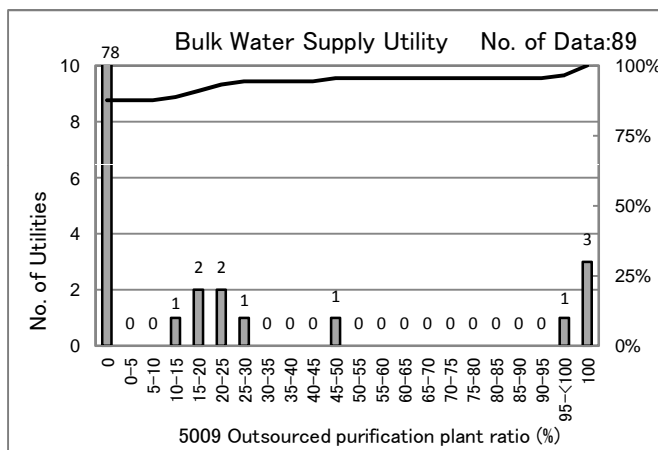
[Percentile Value] Water Utility
Fiscal year

F.Y.	95%	75%	50%	25%	5%
2008	0.0	0.0	0.0	0.0	0.0
2009	0.0	0.0	0.0	0.0	0.0
2010	0.0	0.0	0.0	0.0	0.0
2011	0.0	0.0	0.0	0.0	0.0
2012	0.0	0.0	0.0	0.0	0.0

Population supplied (F.Y.2012)

People	95%	75%	50%	25%	5%
<=1	0.0	0.0	0.0	0.0	0.0
1-3	0.0	0.0	0.0	0.0	0.0
3-10	0.0	0.0	0.0	0.0	0.0
10-50	3.8	0.0	0.0	0.0	0.0
50<	0.0	0.0	0.0	0.0	0.0

× 10,000people



[Percentile Value]	F.Y.	95%	75%	50%	25%	5%
Bulk Water Supply Utility	2009	59.9	0.0	0.0	0.0	0.0
	2010	27.9	0.0	0.0	0.0	0.0
	2011	26.1	0.0	0.0	0.0	0.0
	2012	40.5	0.0	0.0	0.0	0.0

[Scatter Plot]

