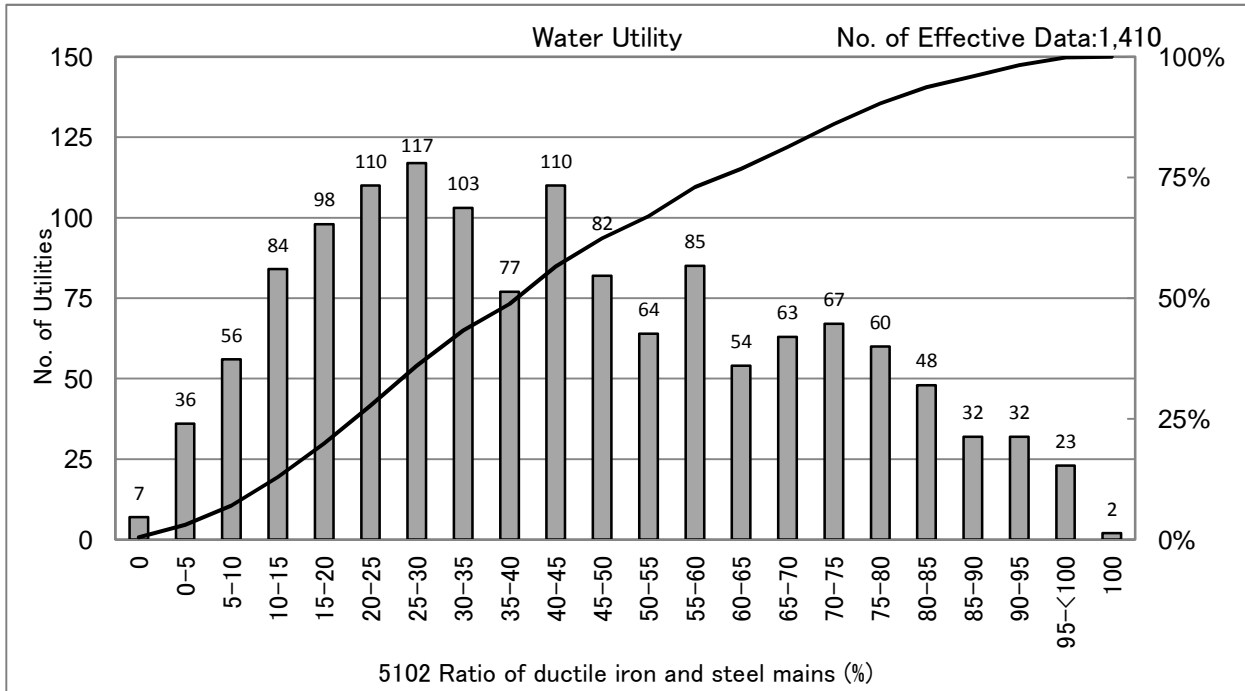


5102 Ratio of ductile iron and steel mains (%)

Ratio of ductile iron and steel mains = (Length of ductile cast iron pipes[km] + Length of steel pipes[km]) / Total pipeline length[km] x 100 (%)



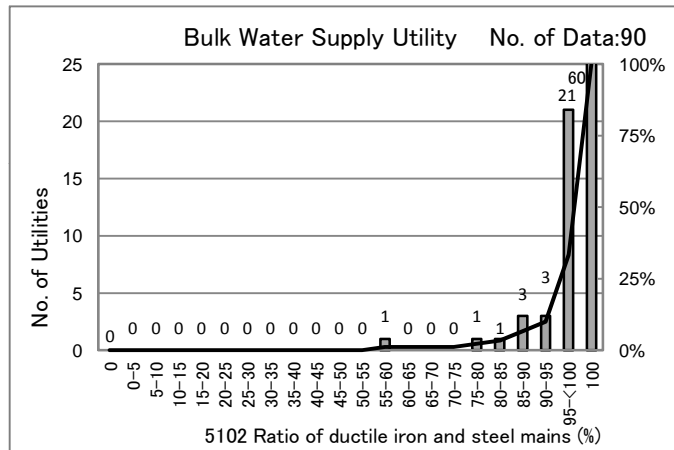
[Percentile Value] Water Utility
Fiscal year

F.Y.	95%	75%	50%	25%	5%
2008	87.2	60.2	38.9	22.4	6.6
2009	87.3	61.1	40.1	22.9	7.0
2010	87.9	62.2	40.4	23.0	7.6
2011	88.1	62.7	40.3	23.1	7.8
2012	88.0	62.8	40.6	23.1	7.8

Population supplied (F.Y.2012)

People	95%	75%	50%	25%	5%
<=1	75.2	45.3	26.2	12.5	1.6
1-3	78.6	48.4	30.8	20.6	8.9
3-10	89.2	68.5	48.3	31.1	15.0
10-50	95.6	79.4	63.7	46.6	29.1
50<	98.5	92.9	78.2	68.9	58.2

× 10,000people



[Percentile Value]	F.Y.	95%	75%	50%	25%	5%
Bulk Water	2009	100.0	100.0	100.0	99.2	75.3
Supply Utility	2010	100.0	100.0	100.0	99.4	79.5
	2011	100.0	100.0	100.0	99.4	82.9
	2012	100.0	100.0	100.0	99.4	87.7

[Scatter Plot]

