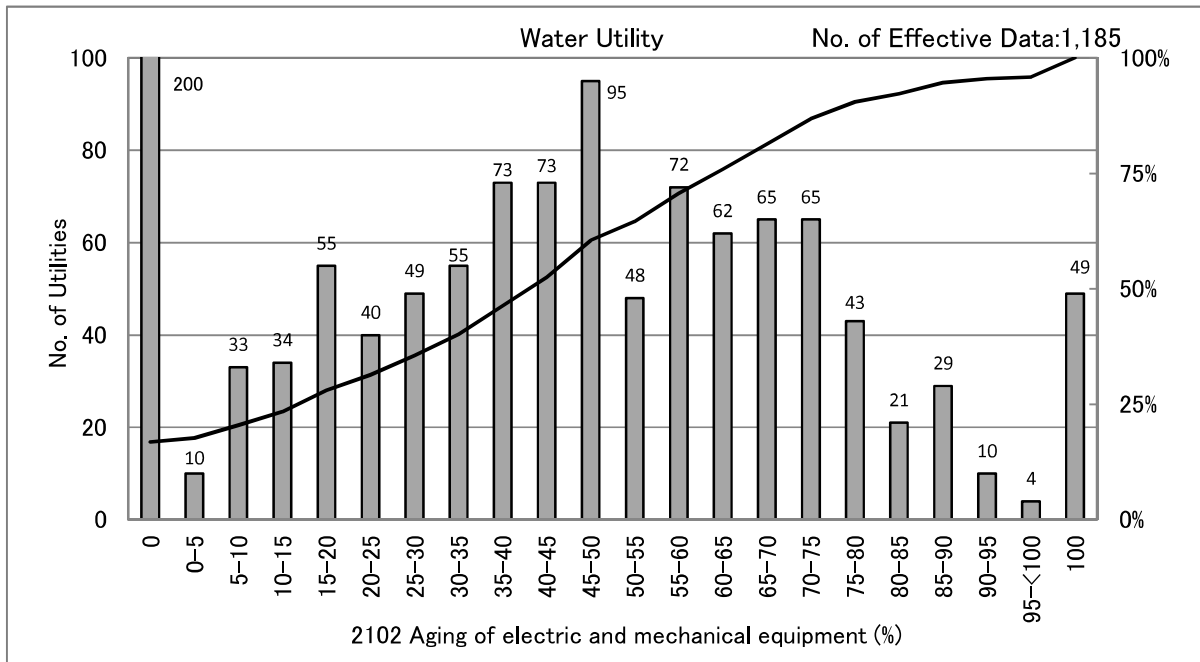


## 2102 Aging of electric and mechanical equipment (%)

Aging of electric and mechanical equipment = Number of electric and mechanical equipment exceeding life cycle[No.] / Total number of electric and mechanical equipment[No.] x 100 (%)



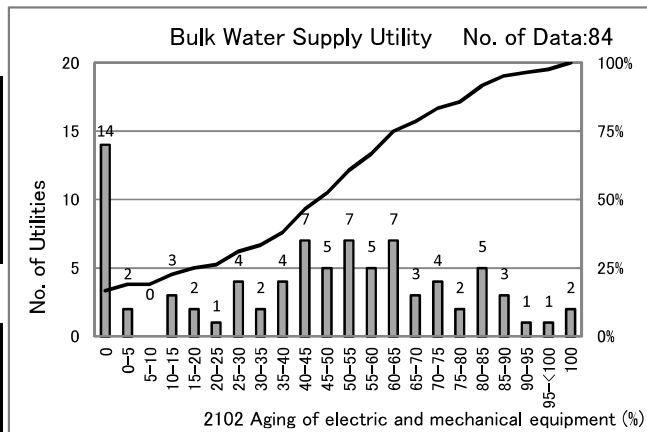
[Percentile Value] Water Utility  
Fiscal year

F.Y.	95%	75%	50%	25%	5%
2009	90.2	61.8	41.7	19.0	0.0
2010	91.4	61.2	42.1	18.8	0.0
2011	92.4	62.5	42.2	18.2	0.0
2012	91.9	61.6	42.4	18.2	0.0
2013	90.9	64.7	42.9	17.0	0.0

Population supplied (F.Y.2013)

Persons	95%	75%	50%	25%	5%
<=1	100.0	65.8	34.7	0.0	0.0
1-3	92.8	64.9	40.5	13.6	0.0
3-10	86.6	64.4	45.5	24.0	0.0
10-50	77.8	64.1	49.1	33.3	2.9
50<	69.5	55.6	45.5	36.2	17.6

× 10,000persons



[Percentile Value]	F.Y.	95%	75%	50%	25%	5%
Bulk Water Supply Utility	2010	77.8	56.8	36.4	15.9	0.0
	2011	83.9	58.9	42.2	12.4	0.0
	2012	88.4	59.5	40.6	20.0	0.0
	2013	86.3	64.4	48.9	23.1	0.0

[Scatter Plot]

