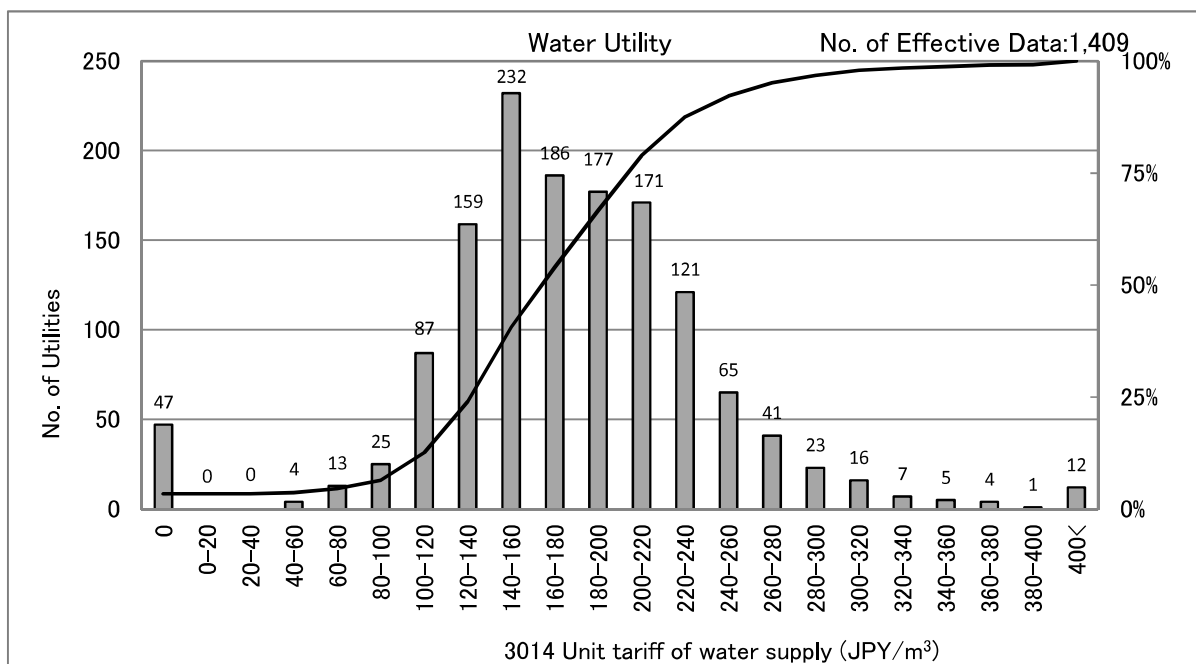


3014 Unit tariff of water supply (JPY/m³)

Unit tariff of water supply = Water supply revenue[JPY]
/ Revenue water volume[m³] x 100 (JPY/m³)



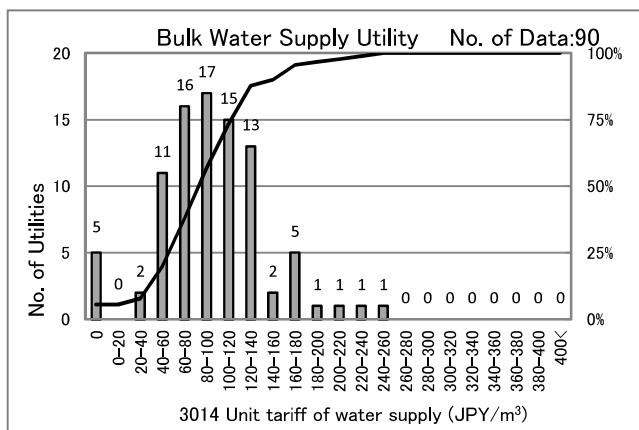
[Percentile Value] Water Utility
Fiscal year

F.Y.	95%	75%	50%	25%	5%
2009	281.5	213.6	172.6	139.4	81.1
2010	279.1	213.1	171.7	139.6	78.9
2011	277.2	212.2	171.5	140.6	80.4
2012	277.7	213.4	172.0	140.8	81.6
2013	277.7	213.6	173.3	141.2	82.9

Population supplied (F.Y.2013)

Persons	95%	75%	50%	25%	5%
<=1	339.0	234.3	186.1	137.8	0.0
1-3	271.9	216.9	176.9	140.7	82.8
3-10	263.0	210.4	173.0	144.1	106.9
10-50	236.4	188.2	162.6	141.0	111.8
50<	214.4	178.5	163.5	152.9	131.8

x 10,000persons



[Percentile Value]	F.Y.	95%	75%	50%	25%	5%
Bulk Water	2010	173.8	125.2	99.0	68.0	8.8
Supply Utility	2011	174.8	120.6	92.8	67.9	8.8
	2012	177.2	121.3	93.3	67.3	8.8
	2013	177.8	121.7	94.0	69.4	9.9

[Scatter Plot]

