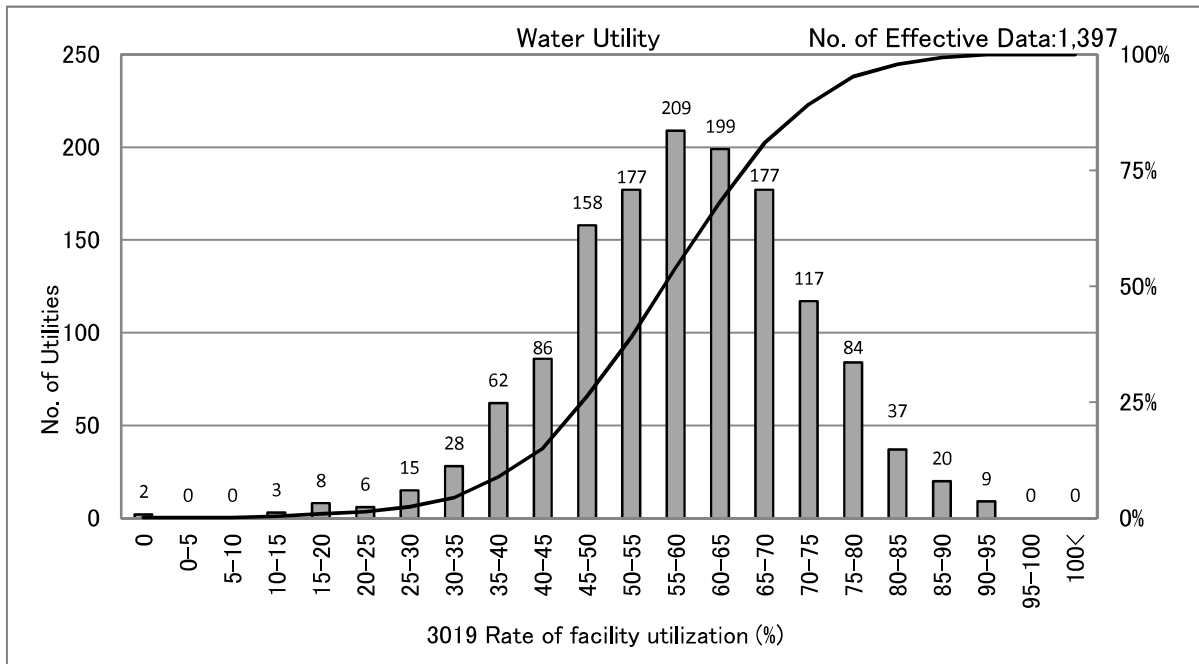


# 3019 Rate of facility utilization (%)

$$\text{Rate of facility utilization} = \frac{\text{Average daily supply}[\text{m}^3/\text{day}]}{\text{Daily capacity}[\text{m}^3/\text{day}] \times 100 (\%)}$$



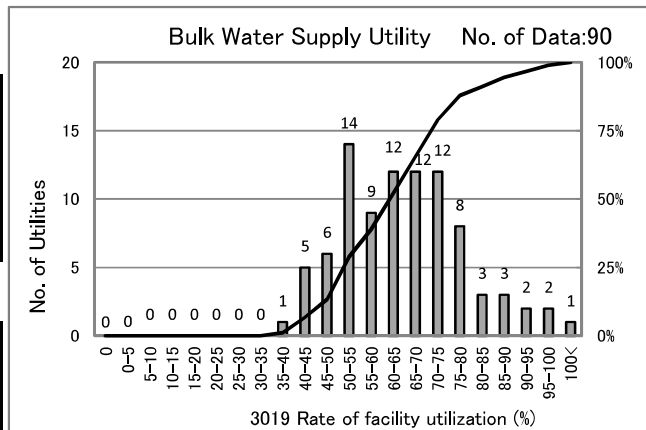
[Percentile Value] Water Utility  
Fiscal year

F.Y.	95%	75%	50%	25%	5%
2009	78.8	67.3	59.3	50.1	36.9
2010	79.1	68.0	59.8	50.6	37.3
2011	79.2	67.5	59.2	50.2	36.5
2012	79.4	67.5	58.8	49.9	36.3
2013	79.7	67.6	58.8	49.4	35.9

Population supplied (F.Y.2013)

Persons	95%	75%	50%	25%	5%
<=1	78.0	63.5	52.5	41.7	26.5
1-3	80.7	66.2	57.4	48.8	37.2
3-10	79.4	69.5	60.7	52.6	42.2
10-50	81.2	71.6	63.5	57.7	47.6
50<	71.4	66.8	62.5	57.4	49.9

× 10,000persons



[Percentile Value]	F.Y.	95%	75%	50%	25%	5%
Bulk Water	2010	89.5	74.5	65.0	55.4	43.2
Supply Utility	2011	89.0	73.0	63.3	56.1	43.0
	2012	89.4	73.5	64.7	55.2	42.7
	2013	91.6	73.3	64.4	54.7	42.9

[Scatter Plot]

