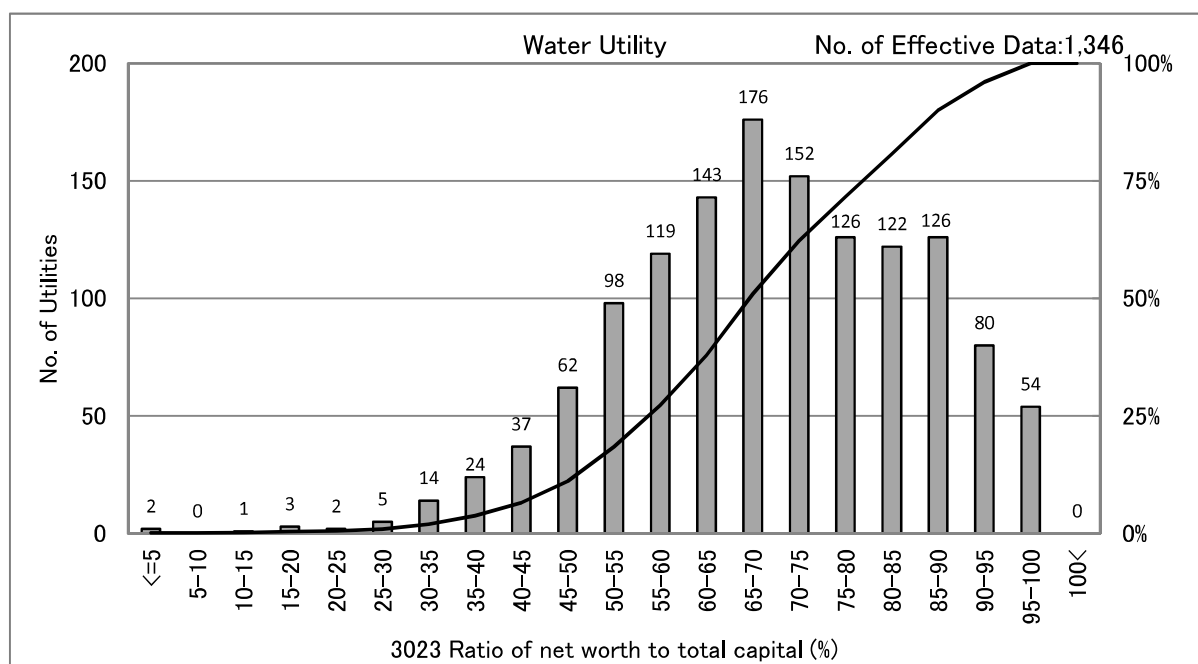


3023 Ratio of net worth to total capital (%)

Ratio of net worth to total capital = (Owned capital[JPY] + Surplus[JPY]) / Total of liabilities and capital[JPY] x 100 (%)



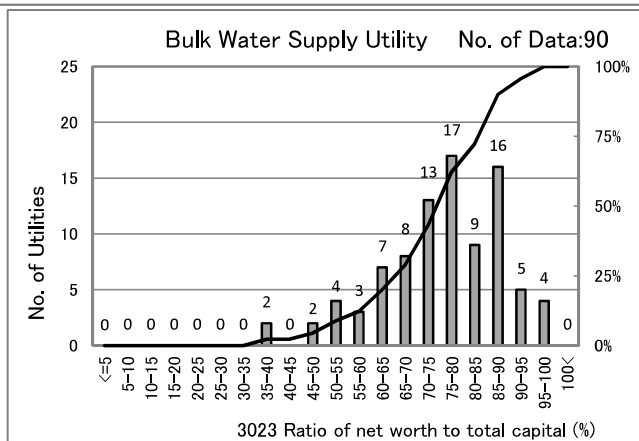
[Percentile Value] Water Utility
Fiscal year

| F.Y. | 95%値 | 75%値 | 50%値 | 25%値 | 5%値 |
|------|------|------|------|------|------|
| 2009 | 92.7 | 77.7 | 65.5 | 54.5 | 37.8 |
| 2010 | 93.2 | 78.9 | 66.8 | 55.8 | 39.4 |
| 2011 | 93.7 | 80.5 | 67.8 | 56.8 | 40.3 |
| 2012 | 94.2 | 81.7 | 68.8 | 57.9 | 41.8 |
| 2013 | 94.5 | 82.1 | 69.7 | 58.8 | 42.7 |

Population supplied (F.Y.2013)

| Persons | 95%値 | 75%値 | 50%値 | 25%値 | 5%値 |
|---------|------|------|------|------|------|
| <=1 | 96.2 | 83.8 | 70.9 | 54.9 | 35.2 |
| 1-3 | 93.2 | 80.2 | 68.1 | 58.1 | 39.0 |
| 3-10 | 94.5 | 81.8 | 70.2 | 61.1 | 48.1 |
| 10-50 | 92.6 | 83.3 | 71.0 | 61.7 | 46.8 |
| 50< | 79.1 | 71.4 | 64.7 | 58.5 | 51.3 |

× 10,000persons



| [Percentile Value] | F.Y. | 95% | 75% | 50% | 25% | 5% |
|--------------------|------|------|------|------|------|------|
| Bulk Water | 2010 | 90.1 | 78.8 | 71.8 | 65.0 | 47.6 |
| Supply Utility | 2011 | 91.3 | 81.8 | 73.5 | 66.4 | 49.3 |
| | 2012 | 93.2 | 83.9 | 74.4 | 67.8 | 50.5 |
| | 2013 | 92.2 | 86.2 | 76.9 | 69.3 | 50.9 |

[Scatter Plot]

