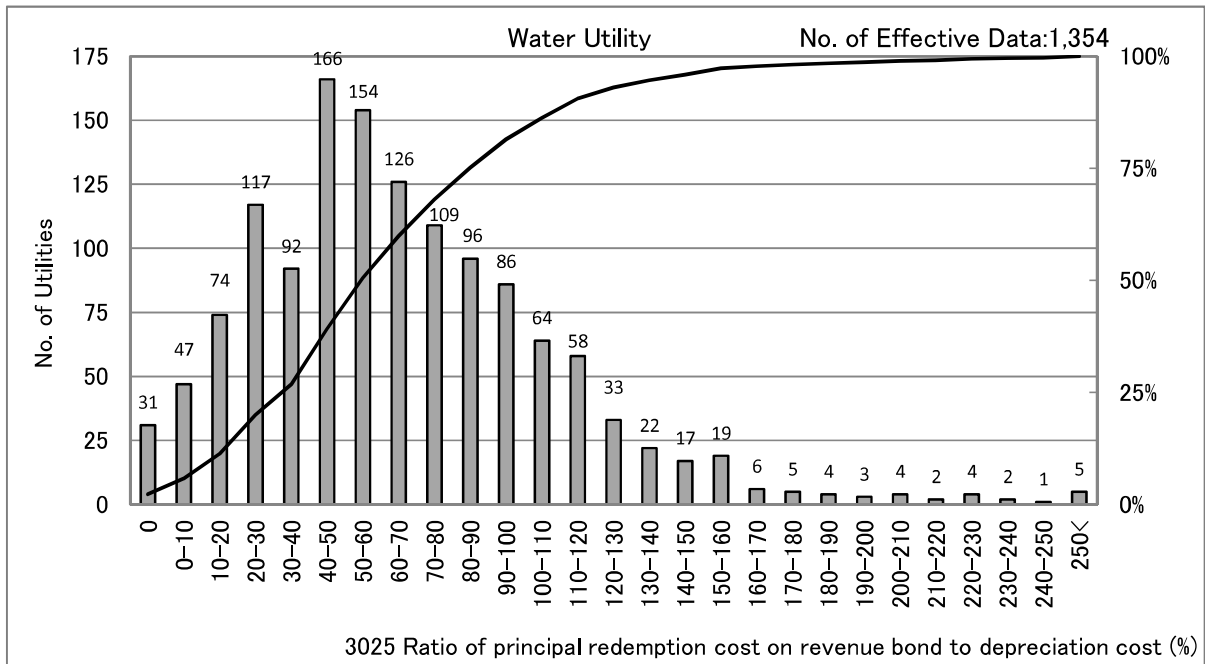


### 3025 Ratio of principal redemption cost on revenue bond to depreciation cost (%)

Ratio of principal redemption cost on revenue bond to depreciation cost =  $\frac{\text{Redemption principal[JPY]}}{\text{Depreciation cost[JPY]} \times 100 (\%)}$



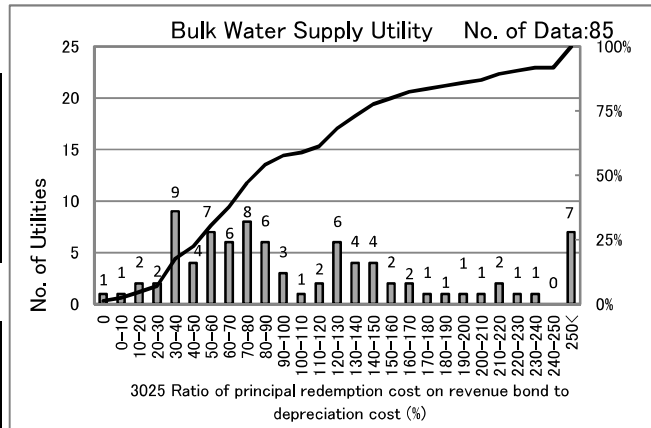
[Percentile Value] Water Utility  
Fiscal year

F.Y.	95%	75%	50%	25%	5%
2009	274.0	120.0	73.0	42.3	10.9
2010	160.1	98.4	64.4	40.9	9.5
2011	148.8	92.1	63.5	40.1	8.2
2012	170.1	98.9	66.4	41.2	9.0
2013	144.5	89.9	59.8	37.5	8.5

Population supplied (F.Y.2013)

Persons	95%	75%	50%	25%	5%
<=1	161.2	105.1	61.8	34.6	0.0
1-3	147.9	95.1	65.8	41.7	13.6
3-10	128.8	81.0	58.7	36.1	10.1
10-50	118.8	72.8	51.5	35.7	11.5
50<	113.1	85.5	60.4	50.0	40.4

× 10,000persons



[Percentile Value]	F.Y.	95%	75%	50%	25%	5%
Bulk Water Supply Utility	2010	363.4	164.0	106.1	62.1	29.5
	2011	306.6	139.6	92.7	58.0	23.5
	2012	445.5	146.4	93.3	52.5	30.5
	2013	268.7	144.8	82.9	54.7	21.2

[Scatter Plot]

