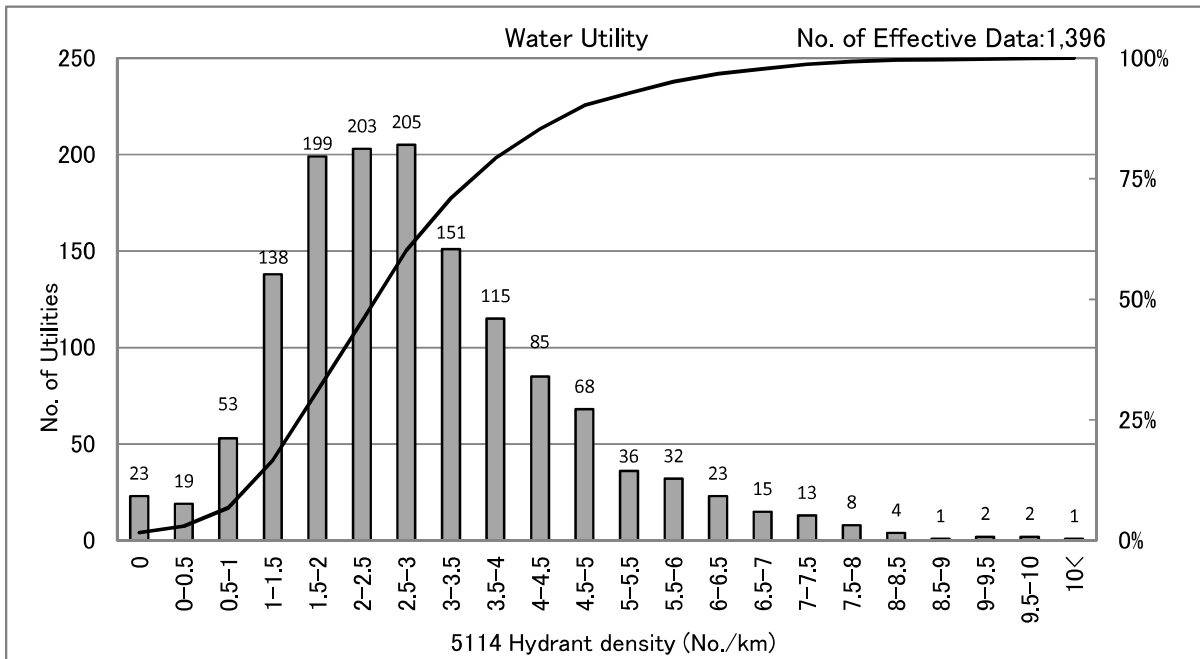


5114 Hydrant density (No./km)

Hydrant density = Total number of hydrants[No.] / Distribution pipe length[km] (No./km)



[Percentile Value] Water Utility

Fiscal year

F.Y.	95%	75%	50%	25%	5%
2009	6.0	3.8	2.6	1.8	0.7
2010	6.0	3.8	2.7	1.8	0.8
2011	6.0	3.8	2.7	1.8	0.8
2012	5.9	3.8	2.7	1.8	0.8
2013	6.0	3.8	2.7	1.8	0.8

Population supplied (F.Y.2013)

Persons	95%	75%	50%	25%	5%
<=1	6.4	3.9	2.5	1.4	0.4
1-3	5.5	3.5	2.5	1.7	0.8
3-10	5.4	3.6	2.7	2.0	1.2
10-50	6.2	4.0	2.9	2.2	1.3
50<	8.1	6.1	5.1	3.5	2.4

× 10,000persons

[Scatter Plot]

